

# AOA-2415

2.4~2.5GHz Omni Antenna 15dBi

AOA-2415 antennas are professionally engineered and manufactured with the highest industry quality at the lowest possible price providing extreme value.

AOA-2415 is designed for the 2.4GHz ISM band, supporting 2.4 to 2.483 GHz and provides superb performance in IEEE 802.11b/g WiFi and Bluetooth applications.

AOA-2415 includes mounting bracket and hardware for up to 2" OD masts. Made with fiberglass

## Applications:

2.4 - 2.5 GHz ISM Band  
IEEE 802.11b, 802.11g, 802.11n Wireless LAN  
Directional and multipoint applications  
Bluetooth  
Public Wireless Hotspot  
WiFi, RFID  
Wireless Video Systems

## Features :

Superior performance  
Light weight  
All weather operation  
DC Short lightning protection  
Installed for vertical  
Includes tilt and swivel mast mount  
In accordance with customer needs to change the color or features



<b>Model</b>	AOA-2415
<b>Frequency</b>	2.4-2.5GHz
<b>VSWR</b>	≤ 1.3
<b>Gain</b>	15dBi
<b>Polarization</b>	Vertical
<b>Power Handling</b>	50 Watts
<b>Impedance</b>	50 Ω
<b>Beam Width</b>	H: 360° / V: 6°
<b>Connector</b>	N Female
<b>Operation Temp</b>	-40°C ~ +80°C
<b>Dimension</b>	1485*68 mm
<b>Mounting</b>	32 ~ 45 mm ( 1.2 ~1.75 inch )
<b>Weight</b>	910g

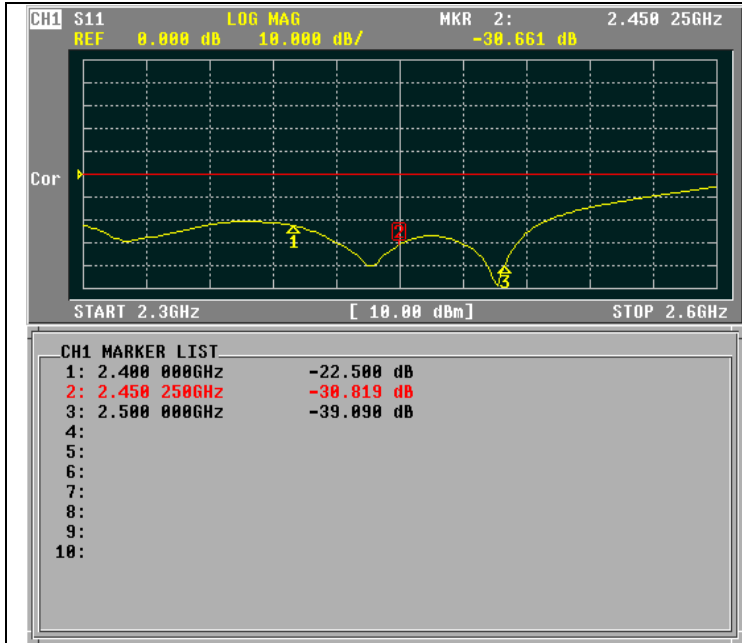
## For further details:

Alfa Network Inc.,  
4F-1 No. 106, Rueiguang Rd.,  
Neihu District,  
Taipei City, Taiwan.  
<http://www.alfa.com.tw>  
[sales@alfa.com.tw](mailto:sales@alfa.com.tw)  
Tel:+886-2-27968477  
Fax:+886-2-27968478

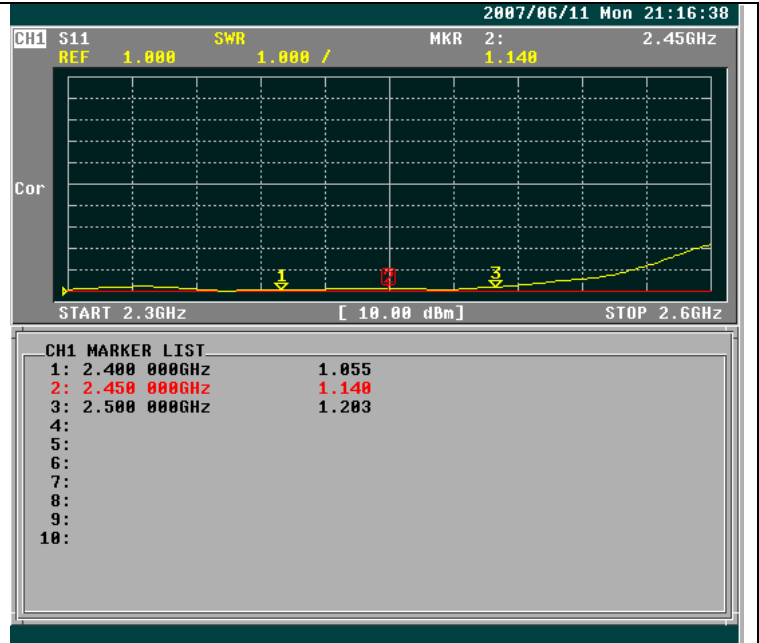
# AOA-2415

2.4~2.5GHz Omni Antenna 15dBi

## Network Analyzer Test Report



Return loss

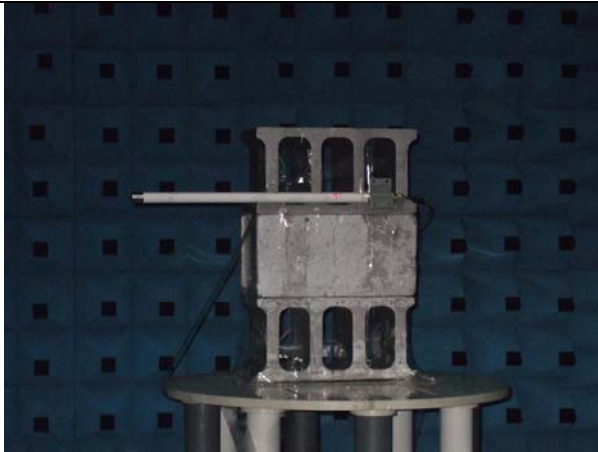


V.S.W.R

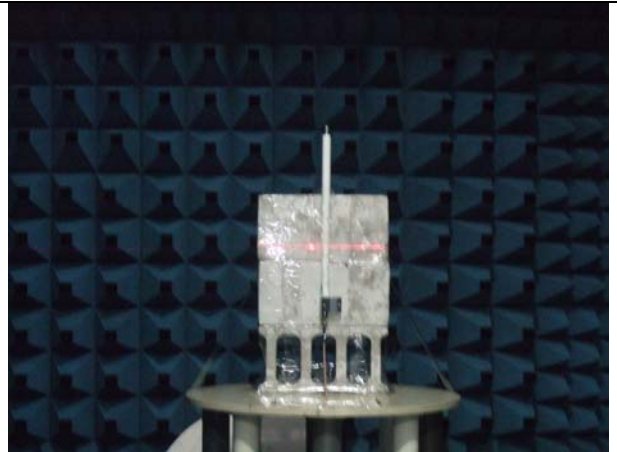
# AOA-2415

2.4~2.5GHz Omni Antenna 15dBi

## RF Chamber Test Report Frequency: 2.4 ~ 2.5GHz



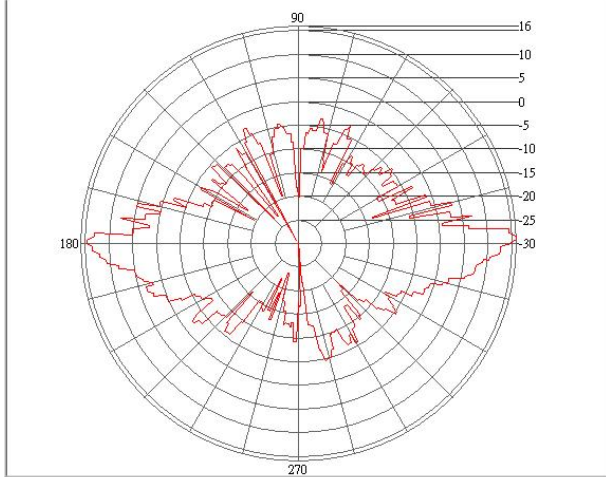
Vertical Pattern Photos



Horizontal Pattern Photos

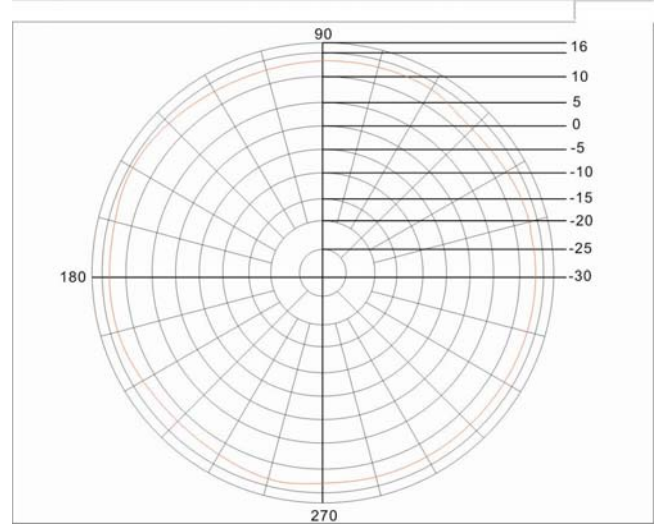
Frequency: 2.4-2.5GHz

E-plane co-pol ----- 3-dB beam-width=6 Deg



Vertical Pattern

H-plane co-pol ----- 3-dB beam-width=360 Deg

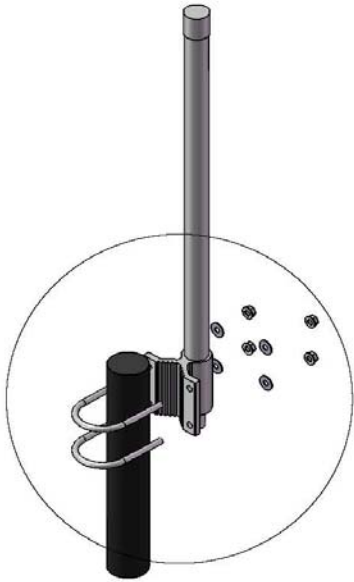


Horizontal Pattern

# AOA-2415

2.4~2.5GHz Omni Antenna 15dBi

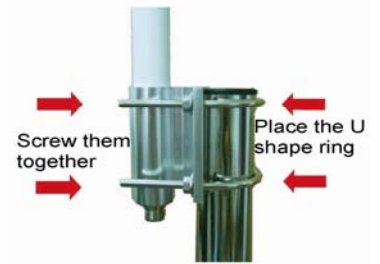
## Mounting Kits Install Guide



2 : 5



**1.**



**2.**



**3.**

**Finish**

